



# RAJEEV & Company

(An ISO 9001:2015 Company)

Manufacturers of **KAVAATA BALL VALVES**



[www.kavaatavalves.com](http://www.kavaatavalves.com)



## About Company

Kavaata Valves are High Quality Ball Valves manufactured by Rajeev and Company. Established in 1996 as a ball valve component manufacturer, the company has grown over the years to become one of the leading manufacturers of Ball Valves with sales all around the world.

Rajeev & Company is part of Rao Enterprises Group. Rao Enterprises ([www.raoenterprises.com](http://www.raoenterprises.com)) was established in 1984 in Belgaum, India as a Textile manufacturing firm, producing Polyester Sarees (A traditional Indian dress). In 1996, the group diversified into the field of Engineering & started manufacturing Ball valve components such as Balls, Stems, Glands etc. They used the latest machining technology in the form of CNC machines, which gave their components superior quality & repeatability. Soon Rajeev & Company become the sought after company for Ball Valve Components. In 2006, the company diversified into manufacturing Ball Valves under its own brand name "Kavaata Valves".

In 2012 a new division named Kavaata Tools ([www.kavaatatools.com](http://www.kavaatatools.com)) was started to manufacture U drills & spot face cutters.

The plant is located on a lush green 4 acre plot amid 1000 teak, coconut & mango plantations. The campus consist of a 17000 sq. ft. building which houses state of the art machinery for manufacturing valve components, such as CNC turning centers, CNC vertical machining center, Lathes, Milling machine, Buffing & Welding machines.

# Certificates

- **ISO 9001:2015 CERTIFICATE**  
"Rajeev & Company is an ISO 9001:2015 company by TUV SUD, Germany".



- **FIRE SAFE CERTIFICATE**  
"Kavaata Valves Flanged End 2 Piece Ball Valves are certified for fire safe use by TUV SUD, Germany".



# Main Clients

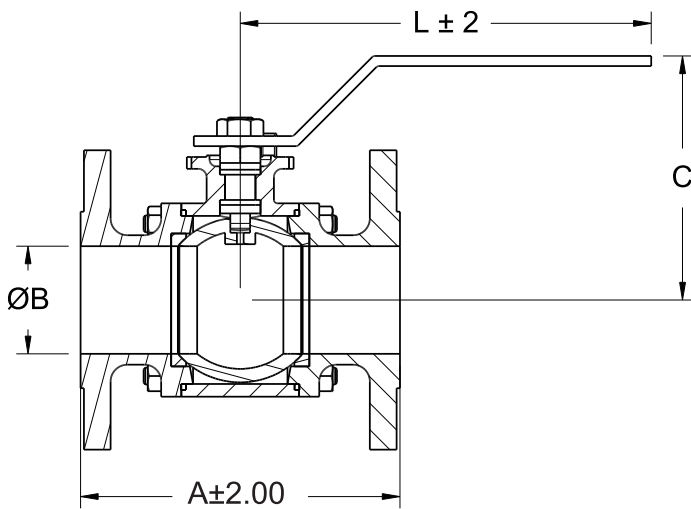


# Flanged End 3 Piece Ball Valve



Kavaata Flanged End Ball Valves are made from Investment Castings, designed & manufactured as per **ISO 17292 / API6D** standards. The material of construction generally offered are **ASTM A216 Gr WCB (CS)**, **ASTM A351 Gr CF8 (SS304)** & **ASTM A351 Gr CF8M (SS316)**.

## Technical Specifications



Dimensions for Class 150#

SIZE	A	B	C	L
15 FB	108	13	80	170
20 FB	118	20	81	170
25 FB	127	25	98	190
40 FB	165	38	121	250
50 FB	178	50	132	250
80 FB	203	75	166	300
100 FB	229	100	190	400
150FB	267	150	*	*
200FB	457	200	*	*

All dimensions are in mm

| Due to continuous improvements, dimensions are subject to change  
| \*Actuator Mounted | Contact for other classes

## Technical Data



PART NAME	MATERIAL
Body/ Adapters	ASTM A216 Gr WCB ASTM A351 Gr CF8 ASTM A351 Gr CF8M
Ball	SS304/SS316/SS410
Stem	SS304/SS316
Nuts	SS304
Studs	CS or SS304
Nuts	CS or SS304
Seat	PTFE / GFT
Seal	CFT

## VALVE STANDARDS

Pressure Rating	ASA 150#/300#/600#
Design	BS5351/ISO17292
Face to Face	ASME B 16.10

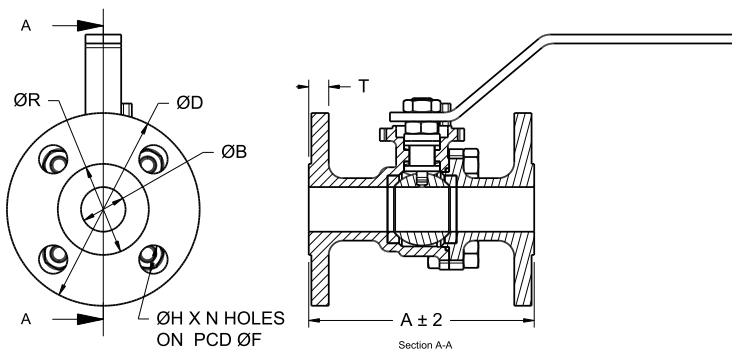
Flange Dimension	ASME B 16.5
Test Pressure	BS 6755/API 598

# Flanged End 2 Piece Ball Valve



Flanged End two piece design Ball Valve are economical & less prone to leakages & are by far most commonly used Ball Valves in the industry. These Ball Valves are available in **ASA Class 150#** & are tested as per **Fire safe test** standards such as **API 607 VI** edition / **ISO 10497:2010**.

## Technical Specifications



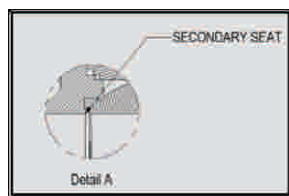
Dimensions for Class 150#

SIZE	A	ØB	ØD	ØR	ØF	ØH X N	T
15FB	108	13	90	35	60.3	16x4	10
20FB	117	19	100	43	69.9	16X4	11
25FB	127	25	108	51	79.4	16X4	11.2
40FB	165	38	127	73	98.4	16X4	14.7
50FB	178	50	150	92	120.7	19X4	16
80FB	203	75	190	127	152.4	19X4	19
100FB	229	100	229	157	190.5	19X8	24
150FB	267	150	280	216	241.3	22.22X8	25.4

All dimensions are in mm

| Due to continuous improvements, dimensions are subject to change

## Technical Data



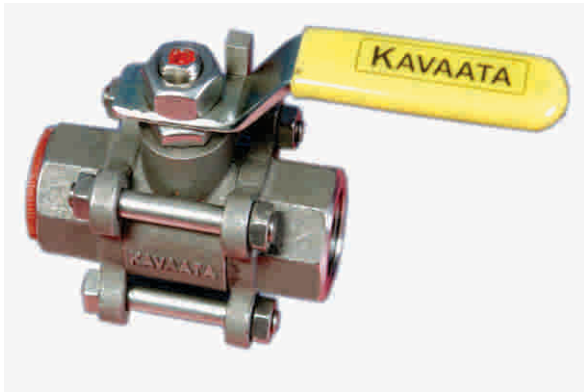
PART NAME	MATERIAL
Body/ Adapter	ASTM A 216 Gr. WCB ASTM A351 Gr. CF8 ASTM A351 Gr. CF8M
Ball	SS304/ SS 316/ CF8/ CF8M
Stem	SS304/ SS316
Seat	PTFE / RPTFE
Seals	PTFE
Lever	CS

## VALVE STANDARDS

Pressure Rating	ASA 150#
Design	BS5351/ISO17292
Face to Face	ASME B 16.10

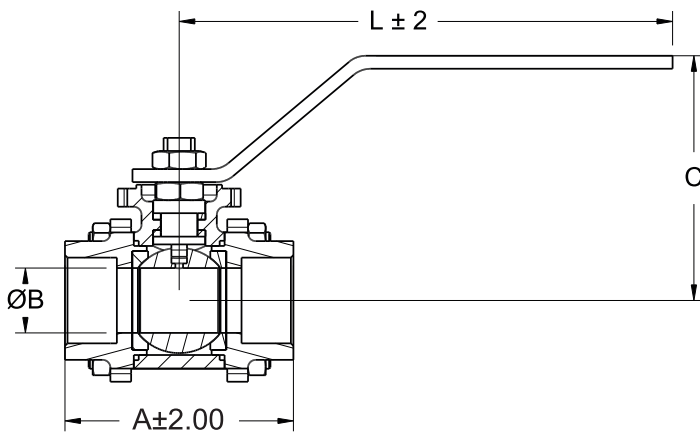
Flange Dimension	ASME B 16.5
Test Pressure	BS 6755/API 598

# Screwed End 3 Piece Ball Valve



Kavaata Screwed End Investment Cast Ball Valves are designed and manufactured as per **BS5351/ISO17292** or **API 6D** standards. The material of construction generally offered are **ASTM A216 Gr WCB (CS)**, **ASTM A351 Gr CF8 (SS304)** and **ASTM A351 Gr CF8M (SS316)**.

## Technical Specifications



Section A-A

SIZE	A	B	C	L
15 FB	75	13	51	85
20 FB	81	19	56	85
25 FB	88	25	98	190
40 FB	120	38	119	250
50 FB	128	50	127	250

All dimensions are in mm

| Due to continuous improvements, dimensions are subject to change

## Technical Data

PART NAME	MATERIAL
Body / Adapters	ASTM A216 Gr WCB ASTM A351 Gr CF8 ASTM A351 Gr CF8M
Ball	SS304/SS316/SS 410/CF8/CF8M
Stem	SS304 / SS316
Nuts	SS304
Fasteners	CS / SS304
Seat	PTFE / GFT
Seal	PTFE

## VALVE STANDARDS

Pressure Rating ASA 150#/300#/ 600#  
Design Standard BS5351/ISO17292

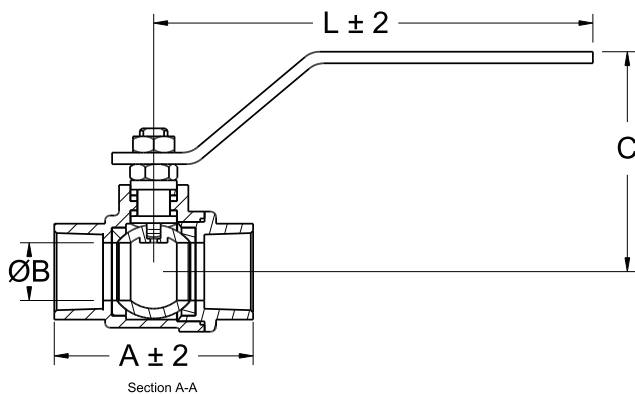
Testing Standard BS 6755/API 598  
End Connection BSP, NPT, Socket Weld

# Screwed End 2 Piece Ball Valve



The screwed end two piece design Ball Valves are economical as the design is simpler with less number of body joints. However, there is no compromise on quality- be it in material selection or workmanship. All the sizes are Full Bore. 1/2" Ball Valve is available in **reduced bore** also.

## Technical Specifications



SIZE	A	ØB	C	L
15FB	68	13	50	90
20FB	76	19	55	90
25FB	85	25	95	195
40FB	114	38	108	250
50FB	124	50	112	250

All dimensions are in mm

| Due to continuous improvements, dimensions are subject to change

## Technical Data

PART NAME	MATERIAL
Body / Adapter	ASTM A 216 Gr. WCB ASTM A351 Gr. CF8 ASTM A351 Gr. CF8M
Ball	SS304/ SS 316/ CF8/ CF8M/SS410
Stem	SS304/ SS316
Seat	PTFE / RPTFE
Seals	PTFE
Gland	SS304
Lever	CS



## VALVE STANDARDS

Pressure Rating ASA 150#/300#  
Design Standard BS5351/ISO17292

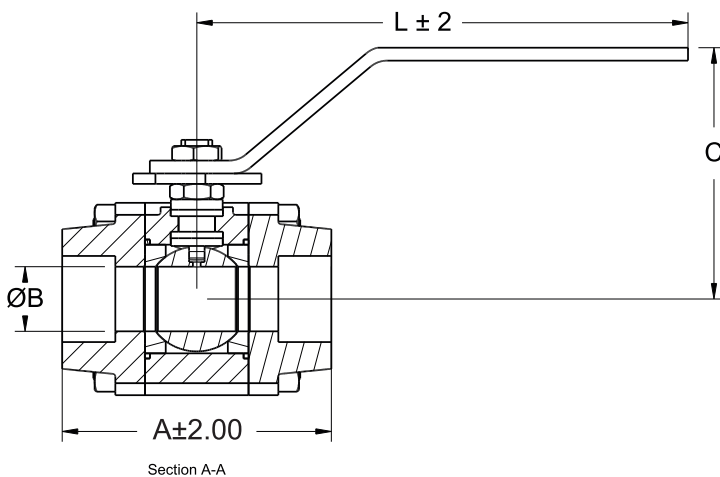
Testing Standard BS 6755/API 598  
Screwed Ends BSP, NPT

# Forged Steel Ball Valve



The Forged Steel Ball Valves are rugged in construction and are designed as per **BS 5351 (ISO 17292)** standards. The material of construction offered is **ASTM A105** Forged Steel. The trims can be supplied in **SS304** or in **SS316**.

## Technical Specifications



Dimensions for Class 800#

SIZE	A	B	C	L
15 RB	69	10	45	90
20 RB	72	13	76	170
25 RB	91	20	84	170
40 RB	118.50	32	102.50	198
50 RB	127	38.10	107	198

All dimensions are in mm

| Due to continuous improvements, dimensions are subject to change

## Technical Data

PART NAME	MATERIAL
Body/ Adapter	ASTM A-105
Ball	SS304 / CF8
Stem	SS304
Nuts	CS
Bolt	CS/ASTM B7
Nuts	CS/ ASTM 2H
Seat /Stem Seal	PTFE/GFT
Seal	GFT
Lever, Locker	CS

## VALVE STANDARDS

Pressure Rating 800#  
Design Standard BS 5351/ISO17292

Testing Standard BS 6755/API 598  
End Connection BSP, BSPT, NPT (F), Socket Weld



## Metal Seated Ball Valves



Metal seated Ball Valves are preferred when the operating temperature is typically above 250 deg C and upto 600 deg C, where the soft seats fail. The ball made of **SS304/SS316** is either coated with **Nickel** (by **Electroless Nickel Plating**) or hard faced with **Stellite** or coated with **Chrome Carbide (HVOF)** depending upon the operating temperature and pressure. The matching metal seats are also hard faced or **HVOF** coated.

These valves are available in three piece design in Flanged and Screwed Ends. For dimensions, please refer to three piece Flanged and Screwed Ends catalogs. 3 Way Metal seated Ball Valve dimensions will be same as for regular 3 Way Ball Valves.

## Technical Specifications



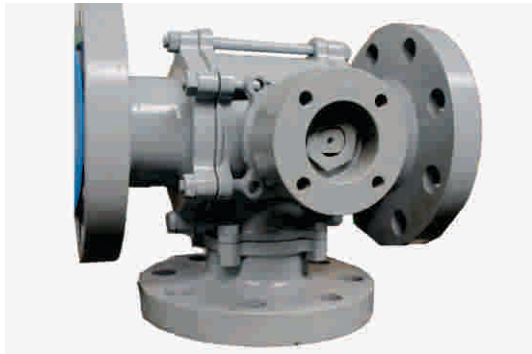
## Technical Data



PARTICULARS	
Material of Construction	CS/ WCB/ CF8/ CF8M
Sizes	1/2" to 8"
Ends	Flanged / Screwed /Socket weld/Butt Weld
Way	2 way / 3 way
Seats	SS 304 / SS316 with hard-faced Stellite/ HVOF
Ball	SS304 / SS316 with ENP or hard-faced Stellite / HVOF
Stem	SS 17-4 PH
Seals	Graphite
Stem Seals	Graphite
Springs	Inconel
Operation	Manual / Actuation (pneumatic,electric)
Temperature	Upto 600 deg C
Pressure Rating	Class 150#/300#/600#

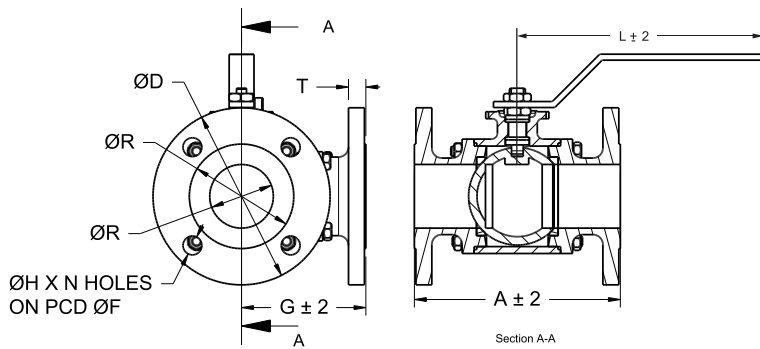
# Multiport Ball Valves

## 3 Way Ball Valve



Three Way (3 Way) Flange end L port divertor Ball Valves are designed and manufactured as per **BS5351 / ISO17292** standards. The materials of construction are **ASTM A216 Gr WCB (CS)**, **ASTM A351 Gr CF8 (SS304)** and **ASTM A351 Gr CF8M (SS316)**. Other materials such as **CF3**, **CF3M** can be supplied against specific requirement.

### Technical Specifications



Dimensions For Flanged End Class 150#

SIZE	A	ØB	ØD	ØR	G	PCD ØF	ØH X N	T	L
15FB	108	13	90	35	66	60.3	16 x 4	10	170
20FB	117	19	100	43	68	69.9	16 x 4	10.9	170
25FB	127	25	108	51	75	79.4	16 x 4	11.2	190
32FB	165	32	115	63.5	100	88.9	16 x 4	13.2	250
40FB	165	38	127	73	92	98.55	16 x 4	14.2	250
50FB	215	50	152	92.1	107	120.6	19 x 4	15.75	250
65FB	207	64	178	105	125	139.7	19 X 4	17.53	300
80FB	245	75	190.5	127	140	152.4	19 X 4	19.05	300
100FB	280	100	229	157	190	190.5	19 X 8	23.88	400
150FB	450	150	279	215.9	225	241.3	22.22 X 8	25.4	800
150FB	404	150	279	215.9	225	241.3	22.22 X 8	25.4	800
200FB	537	200	345	269.9	348	298.5	22.22 X 8	29	800

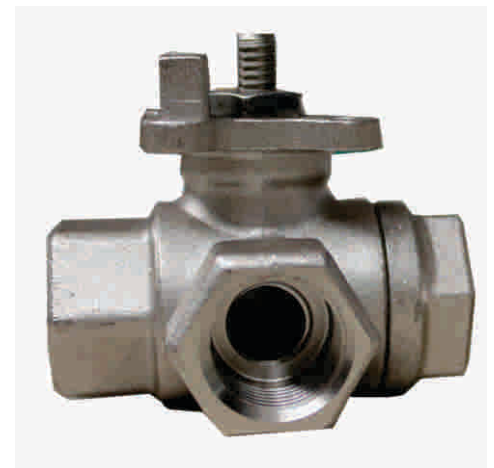
**All dimensions are in mm**

| Due to continuous improvements, dimensions are subject to change  
| Contact for other classes

NOTE: | G is distance from valve bore axis to third side face  
| T is the flange fitting thickness  
| Pressure equalisation line available as option

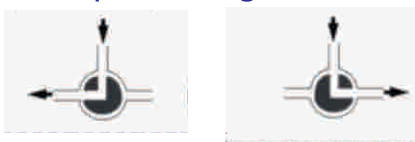
### Technical Data

PART NAME	MATERIAL
Body /Adapters	ASTM A216 Gr WCB ASTM A351Gr CF8 ASTM A351Gr CF8M
Ball /Stem	SS304/SS316
Seat /Body Seal	PTFE
Steam Seal /Gland Seal	PTFE / GFT
Locker Plate	CS
Operating Flange / Handle	CS
Studs / Bolts /Nuts/Gland Nut	CS
Gland	SS304



3-Way Ball Valve can also be supplied in Screwed End. Contact for dimension details.

#### L-port configuration



#### T-port configuration



T-port Ball Valve with 2 seats design is available

## Multiport Ball Valves

### 4 Way Ball Valve



4 Way Ball Valves are offered with L-L port and are manufactured in screwed end as well as flanged end.

### 6 Way Ball Valve



6 Way Ball Valve is designed for Duplex Filters to achieve smooth changeover between the filters. The Valves can be supplied in sizes from **0.5 inch** to **8 inch** full bore. The Material of Construction offered in this range of products is: **ASTM A216 Gr WCB** Body with **CF8/SS304** Internals **ASTM A351 Gr CF8** Body with **CF8/SS304** Internals **ASTM A351 Gr CF8M** Body with **CF8M/SS316** Internals **Super Duplex SS** Body with **Super Duplex SS** Internals.

### 3 Way Double Ball Valve with Common Lever/ Actuator

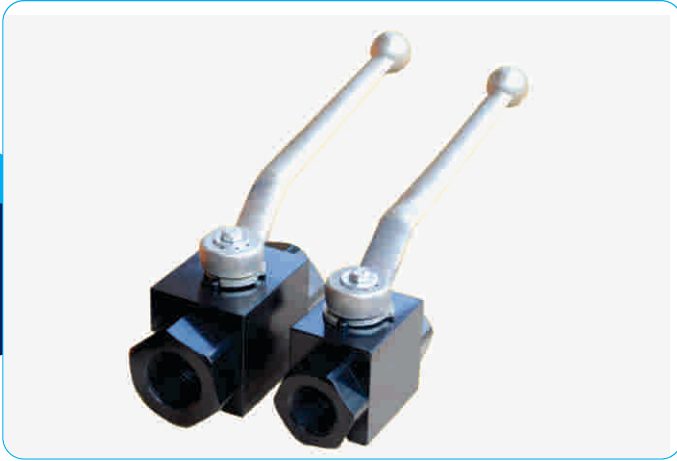


Kavaata is market leader in **Double Three Way Transfer Valves**. These valves are manufactured by coupling two 'Three Way Ball Valves' together by a **flexible coupling**. One single handle is provided to operate the two valves simultaneously. These types of valves are specially used in **Duplex Heat Exchangers** and **Duplex Filters**.

#### VALVE STANDARDS

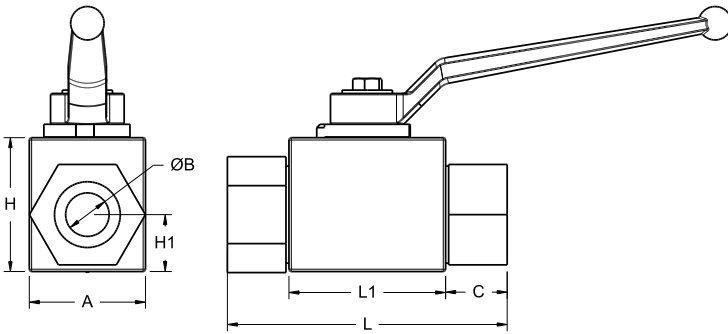
Pressure Rating	ASA 150#/300#/PN10/PN16
Design Standard	BS 5351/ISO17292
Testing Standard	BS 6755/API 598
Flange Dimension	ASME B 16.5

# High Pressure Ball Valve



Lines operating under high pressure, typically around 300 bar, require high pressure ball valves for ON/OFF application. These valves are specially designed to withstand continuous use under these severe conditions. The Material of Construction is **MS & Stainless Steel**. These type valves can be supplied in round and square body.

## Technical Specifications



SIZE	A	B	C	H	H1	L	L1	MAX WORKING PRESSURE
G $\frac{1}{2}$	30	12	15	40	17	82	51	320/500 bar
G $\frac{3}{4}$	41	19	16	55	24	92	60	320 bar
G1	50	24	22.5	60	25.5	115	70	320 bar
G1 $\frac{1}{2}$	75	38	20	94	47	130	91	320 bar

All dimensions are in mm

| Due to continuous improvements, dimensions are subject to change

| Round body for 500 Bar pressure

## Technical Data

PART NAME	MATERIAL
Body /Adapter	MS / Stainless Steel
Ball	SS304
Seat /Stem Seat	POM
Stem	MS / Stainless Steel
Bolt /Washer	MS
Locker Plate	MS ZINC PLATED
Body Seal /Stem Seal	Buna- N
Handle	WCB

## VALVE STANDARDS

Sizes	$\frac{1}{2}$ " , $\frac{3}{4}$ " , 1" , 1 $\frac{1}{2}$ "	Bore	Full Bore
Design Standard	BS5351/ ISO17292	Actuator mounting	Optional
Working Pressure	320 bar	Max Operation Temperature	80°C
Testing Pressure	450 bar	End Connections	Screwed BSP/ NPT

# Automation in Ball Valve



**Ball Valve with Vane type Actuator**



**Ball Valve with Electrical Actuator**

Automation of Ball Valves is done by using pneumatic or electrical actuators. The actuators are mounted using special brackets and are used to divert the flow through the valve. It is important to choose the right kind of actuator, depending on operating conditions of the valve.

The ball valves can also be mounted with limit switches to know the position of the valves either visually and/ or by output signals.



**Pneumatic Actuator with limit switch**



**Ball Valve with Pneumatic Actuator**



**Ball Valve with Gear Actuator**



Limit switches can be provided for three way ball valves and these limit switches can indicate either left side diversion or right side diversion positions. Solenoid Valves and Air filter regulators can be provided on the valves, as a package.

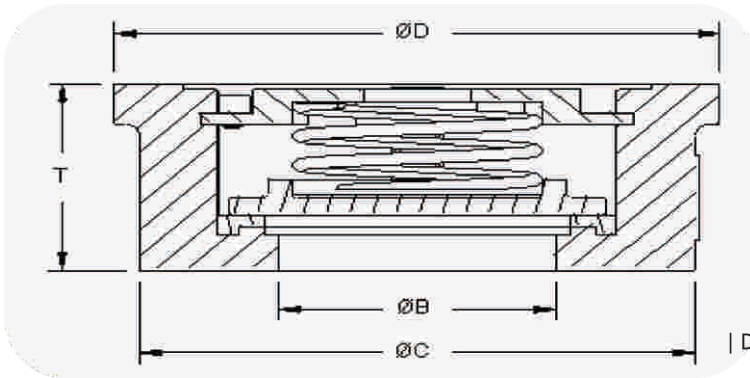
# Non-Slam Check Valve



KAVAATA Non-Slam Check Valves are made from Investment Castings, designed and manufactured as per **BS7438/ ASME 16.34**. The valve can be supplied in sizes like **1/2"** to **4"**. The common materials of construction are **ASTM A216 Gr WCB (CS)**, **ASTM A351 Gr CF8 (SS304)** and **ASTM A351 Gr CF8M (SS316)**.

Non-slam check valves are lift type non return valves used in pipelines to prevent backflow of the fluids with elimination of water hammer effect and hence reducing resultant pressure swings, vibrations and damage. Their application is found throughout the chemical processing industry, steam condensate systems, power generation industry, textile industry, water treatment, boilers etc. These valves are used in process line, hot & cold water system, heating system, oil lines etc

## Technical Specifications

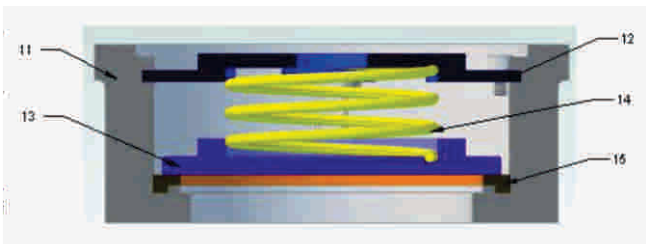


Size	ØB	ØD	ØC	T
1/2"	15	43	38	16
3/4"	20	53	45	19
1"	25	63	55	22
1 1/2"	40	85	79	31.5
2"	50	95	93	40
3"	80	133	128	50
4"	100	154	148	60

All dimensions are in mm

| Due to continuous improvements, dimensions are subject to change

## Technical Data



Part No.	Part Name	Material
11	Body	ASTM A216 Gr WCB, ASTM A315 Gr CF8, ASTM A315 Gr CF8M
12	Cover	SS304/ SS316
13	Disc	SS304/ SS316
14	Spring	SS304/ SS316
15	Seal	PTFE

## Valve Standards

Pressure Rating	PN 100
Design Standard	ASME B-16.34/ BS 7438
Test Pressure	API 598

# Our Infrastructure





# RAJEEV & Company

(An ISO 9001:2015 Company)

Manufacturers of **KAVAATA BALL VALVES**



**Head Office** : 423, Nazar Camp Cross 3, Main Road,  
Vadgaon, Belagavi-590005, Karnataka, India.

**Factory Address** : 103/3, Dewarwadi Village, Chandgad Taluk,  
Kolhapur Dist, Maharashtra - 416507, India

Phone : +91- 831- 2482327/2484635 | Mob.: 9243210643 / 9243222573

E-mail : sales@kavaatavalves.com | ashokraonb@yahoo.com