

KAVAATA[®]



VALVES

TWO PIECE DESIGN SCREWED END BALL VALVE



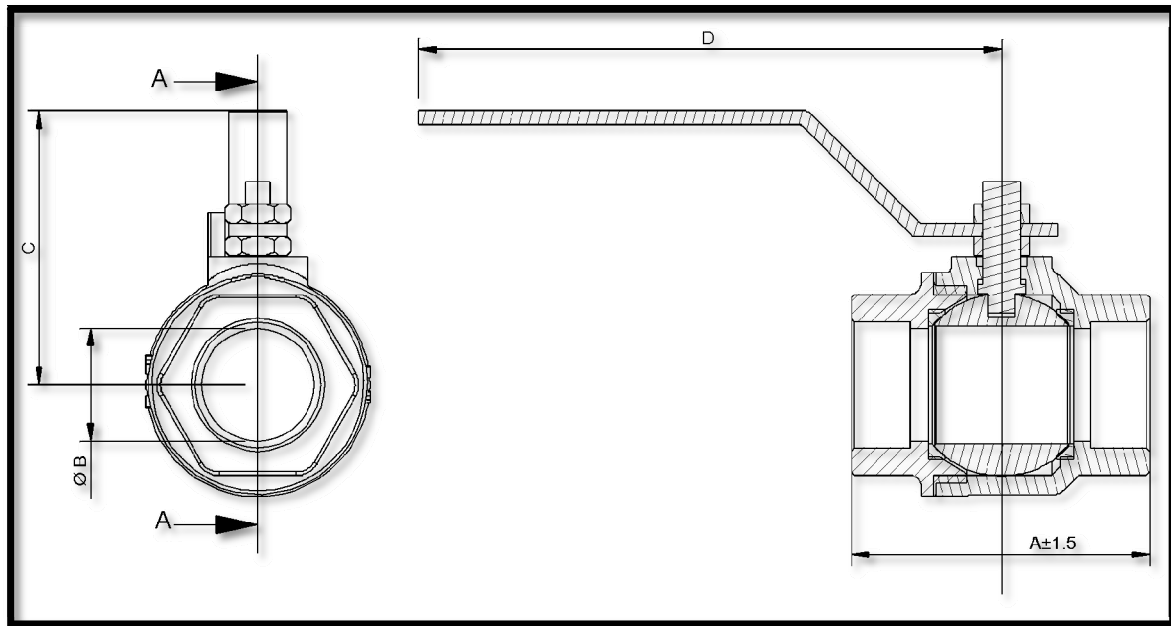
- LOW TORQUE
- BUBBLE TIGHT SHUT OFF
- ECONOMICAL
- BI-DIRECTIONAL
- DESIGN AS PER ASME B.16.34 STANDARD
- 100% TESTED AS PER ISO 5208:2008
- PRESSURE CLASS ASA 300# / PN40

...from excellence to perfection



www.kavaatavalves.com

DIMENSIONS OF TWO PIECE DESIGN SCREWED END BALL VALVE



SIZE	A±1.5	Ø B	C	D	THREAD
DN 15	55	10	40	90	G 1/2" / NPT
DN 20	76	19	55	90	G 3/4" / NPT
DN 25	85	25	95	195	G 1" / NPT
DN 40	114	38	108	255	G 1 1/2" / NPT
DN 50	124	50	112	255	G 2" / NPT

ITEM	PART	MATERIAL	
1	Body	ASTM A351 Gr.CF8/ CF8M (1.4408)	Carbon steel/ ASTM A 216 Gr. WCB
2	Adapter	ASTM A351 Gr.CF8/ CF8M (1.4408)	Carbon steel/ ASTM A 216 Gr. WCB
3	Ball	SS304/ SS 316	
4	Stem	SS304/ SS316	
5	Seat	PTFE / RPTFE	
6	Seals	PTFE	
7	Gland	SS304	
8	Lever	CS	

Rajeev & Company

423, Nazar Camp Cross 3,
Main Road Vadagaon
Belgaum-590005 INDIA

e-mail:
sales@kavaatavalves.com

www.kavaatavalves.com

CELL:
Rajeev Rao: +91 9234220173
Ashok Rao: +91 9243222573
Prashanth Rao: +91 9243210643

OFFICE:
+91 831 2482327
+91 831 2484635

FAX:
+91 831 2481752