

## Company Profile

### 1.0 General Information :

1.1 Name of the Company : **RAJEEV AND COMPANY**

### 1.2 Address

#### Head Office :

423, Nazar Camp Cross 3,  
Main Road, Vadgaon,  
Belgaum - 590005, Karnataka, INDIA

#### Factory :

103/3 Dewarwadi Village,  
Chandgad Taluk, Kolhapur Dist.  
Maharashtra, INDIA

1.3 Tel : ++91-831-2842327 / 2484635 ,

Mob : ++91-9243220173

Mob : ++91-9243222573

1.4 Fax : ++91-831-2481752

1.5 Email [sales@kavaatavalves.com](mailto:sales@kavaatavalves.com)

Website : [www.kavaatavalves.com](http://www.kavaatavalves.com)

### 1.6 Contact Persons

Name	Qualification	Designation
N.B.Rajeev Rao	B.E, KREC, Suratkal. MS(Mechanical Engg), Clemson Univ, USA	MD
N.B.Ashok Rao	B.E, REC, Durgapur, MS(Computer Engg), Univ of Maryland, USA	CEO
Prashanth Rao	Manager - Sales	9243210643

### 1.7 Commercial Information:

Company Registered on	23.04.1990
Commercial Production Started on	April 2006
Local Sales Tax Reg No / State:	MVAT TIN : 27500122766V
Central Sales Tax Reg No	CST TIN : 27500122766C
Excise Registration No:	NIL (Exempt under SSI)
Import Export Code :	702008273 DATED 03.09.2002
Income Tax PAN No:	AABFR9937J
D&B D-U-N-S Number :	67-583-0905
SSI Registration Number :	27-034-12- dated : 29.08.2008
Engineering Export Promotion Council RCMC Number	EEPC:SROB:REG:R:SSI:341:2009-10 valid till 31.03.2014

# RAJEEV & COMPANY



Registrar of Firms, Karnataka Number 22/90-91 dated 23.04.1990

**Any Other commercial detail :**

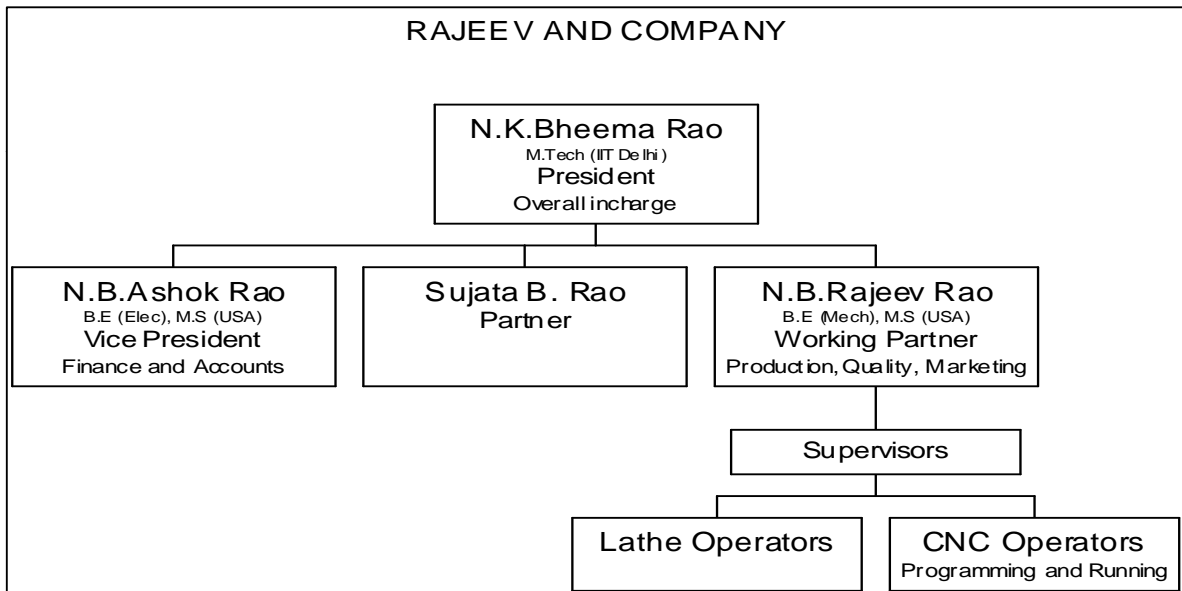
Banker's Name and Address : IDBI BANK, Belgaum  
Account # 101102000003292  
IFSC code : IBKL0000101

**2.0 Organisational Structure :**

Legal Status of the company: Partnership Firm

- Partners : 1 N.B.Rajeev Rao  
2 Sujata B. Rao

Enclosed an Organisational Chart indicating major functions



**3.0 Manufacturing Facilities :**

Factory Area:	CNC Machining Facility	2600 sq.ft.
	Assembly Facility	12000 sq.ft
Sanctioned Power:	CNC Machining Facility	99HP
	Assembly Facility	20 HP

Enclosed list giving details of type of machines, number of machines, capacity, current utilization level and other relevant data.

**4.0 Design & Development capabilities :**

*Product Design is done in house using CAD workstations. Qualified and dedicated Engineers are available for conceptualizing, designing and executing product development. Working partner Mr. Rajeev Rao guides this team.*

*Design software available : Alibre Expert 3D modeling software*

*All required fixtures, tools and testing equipments and designed and manufactured in house.*

**5.0 Quality Assurance :**

ISO 9001:2008 certified

Audited by TUV-SUD. Certificate #

TUV-SUD No. 99 100 03703 valid till 18th March 2014

**6.0 Details of employees :**

Departments	Staff	Workmen	Total
Marketing Department	1		1
Design / Product Development	1		1
Production	3	20	23
Quality Control	1	3	4
HR, Administration	2	2	4
Others		2	2
<b>Total</b>	<b>6</b>	<b>11</b>	<b>35</b>

**7.0 Sub contracting Facilities :**

*No Subcontracting. All components are manufactured in house under strict quality checks.*

**8.0 Present Manufacturing Activity:**

1. Forged Screwed End Ball Valves
2. Three Piece Full Bore Flanged End Investment Cast Ball Valves
3. High Temperature Metal seated Peep Hole Ball Valves
4. One piece reduced bore SS Ball Valves
5. Three Piece Full Bore Screwed End Investment Casting Ball Valves
6. Three Way Screwed End Ball Valves
7. Three Way Flanged End Ball Valves
8. High Pressure Ball Valves
9. Metal Seated Ball Valve for high temperature applications
10. Special Purpose Ball Valve
11. Needle Valve

**9.0 Markets being catered to -**

1. India
2. Thailand
3. Mexico
4. Kuwait
5. Denmark
6. USA

**10.0 List of Machinery**

List Attached

**11.0 List of Instruments**

List Attached