

## Company Profile

### 1.0 General Information :

1.1 Name of the Company :

**RAJEEV AND COMPANY**

1.2 Address

**Head Office :**

423, Nazar Camp Cross 3,  
Main Road, Vadgaon,  
Belgaum - 590005, Karnataka

**Factory :**

103/3 Dewarwadi Village,  
Chandgad Taluk,  
Maharashtra

1.3 Tel : 0831-2842327 / 2484635 ,

Mob : 09243220173

1.4 Fax : 0831-2481752

Mob : 09243222573

1.5 Email [sales@kavaatavalves.com](mailto:sales@kavaatavalves.com)

Website : [www.kavaatavalves.com](http://www.kavaatavalves.com)

### 1.6 Contact Persons

Name	Qualification	Designation
Rajeev Rao	B.E, KREC, Suratkal. MS(Mechanical Engg), Clemson Univ, USA	Partner
Ashok Rao	B.E, REC, Durgapur, MS(Computer Engg), Univ of Maryland, USA	VP (Finance)

### 1.7 Commercial Information:

Local Sales Tax Reg No / State:

MVAT TIN : 27500122766V

Central Sales Tax Reg No

CST TIN : 27500122766C

Excise Registration No:

NIL (Exempt under SSI)

Import Export Code :

702008273 DATED 03.09.2002

Income Tax PAN No:

AABFR9937J

D&B D-U-N-S Number :

67-583-0905

Any Other commercial detail :

Banker's Name and Address :

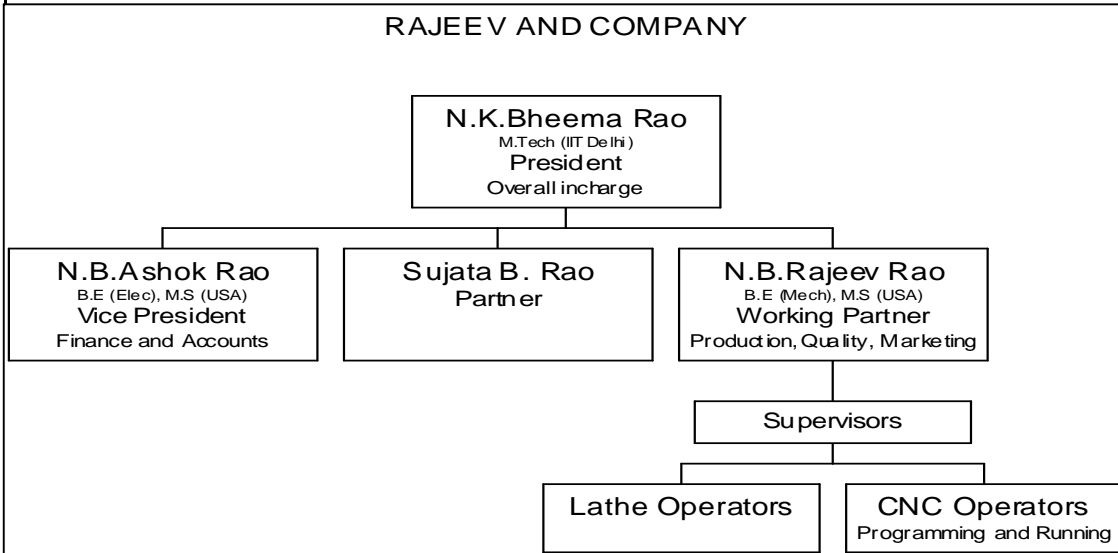
Canara Bank, Tilakwadi, Belgaum

### 2.0 Organisational Structure :

Legal Status of the company:

**Partnership**

Enclosed an Organisational Chart indicating major functions



**3.0 Manufacturing Facilities :**

<b>Factory Area:</b>	CNC Machining Facility	2600 sq.ft.
	Assembly Facility	12000 sq.ft
<b>Sanctioned Power:</b>	CNC Machining Facility	99HP
	Assembly Facility	20 HP

Enclosed list giving details of type of machines, number of machines, capacity, current utilization level and other relevant data.

**4.0 Design & Development capabilities :**

*Product Design is done in house using CAD facilities. Qualified and dedicated Engineers are available for conceptualizing, designing and executing product development. Working partner Mr. Rajeev Rao guides this team.*

*All required fixtures, tools and testing equipments and designed and manufactured in house.*

**5.0 Quality Assurance :**

- 5.1 Do you have a documented QMS ? YES
- 5.2 Are you certified to ISO 9001-2000? YES
- 5.3 List of inspection instruments enclosed

## 6.0 Details of employees :

	Staff	Workmen	Total
Marketing / Department	1		1
Design / Product Development	1		1
Production	3	11	14
Quality Control	1		1
HR, Administration			
Others			
<b>Total</b>	<b>6</b>	<b>11</b>	<b>17</b>

## 7.0 Sub contracting Facilities :

*We are getting rough turning done in our Belgaum unit. The unit is registered as Rao Enterprises. All critical components are manufactured in house.*

## 8.0 Present Manufacturing Activity:

1. Forged Screwed End Ball Valves
2. Three Piece Full Bore Flanged End Investment Cast Ball Valves
3. High Temperature Metal seated Peep Hole Ball Valves
4. One piece reduced bore SS Ball Valves
5. Three Piece Full Bore Screwed End Investment Casting Ball Valves